

Environmentally advanced  
alternative to traditional  
pressure treated timber

Complete protection against  
decay and insect attack.

No maintenance required  
following installation -  
simply fit it and forget it!

The ideal material for  
**BUILDING** and **FENCING**  
timbers.

THE  
TANALITH  
E  
ADVANTAGE

*the NEW CHOICE in  
treated timber*

... *ready and  
waiting  
at*



**James Callander and Son Ltd**

SAWMILLERS & TIMBER MERCHANTS



ABBOTSHAUGH SAWMILL, BAINSFORD, FALKIRK FK2 7XU

TELEPHONE 01324 621563 FAX 01324 634386

E MAIL [info@jcallander.co.uk](mailto:info@jcallander.co.uk)

**James Callander and Son Ltd**

SAWMILLERS & TIMBER MERCHANTS



... make the most of



at

James Callander and Son Ltd  
SAWMILLERS & TIMBER MERCHANTS

**Timber** is still our most versatile and adaptable construction material. A warm and attractive product, it is easily worked for a wide variety of end uses and has a tremendous natural strength.

Yet timber can be made to perform to even higher standards. TANALITH® E treated timber has been pressure impregnated in an industrial process with TANALITH® E environmentally advanced wood preservative to add a

complete protection against decay and insect attack.

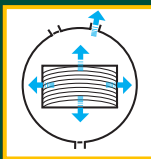
A protection that will give **YOU** and **YOUR CUSTOMERS** complete peace of mind in a job well done that will last and last!

And at **JAMES CALLANDER** we have a range of ready treated TANALITH® E treated timber components just waiting for your next job.

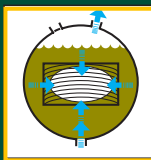
James Callander and Son Ltd  
SAWMILLERS & TIMBER MERCHANTS



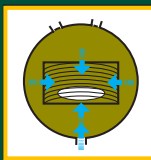
1. Timber is placed in an industrial treatment cylinder and an initial vacuum is created. The timber cells are evacuated of air and the vacuum is held.



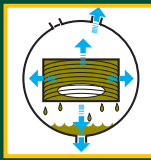
2. The cylinder is flooded under vacuum with Tanalith® E wood preservative.



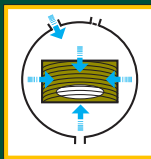
3. Hydraulic pressure is applied, forcing the preservative into the timber cells.



4. A final vacuum extracts excess preservative solution, which is pumped back to storage.



5. Low pressure inside the timber draws in surface preservative solution when vented to atmosphere. Treated timber is then stored until dry before despatch.



## SPECIAL REQUIREMENTS

If you are looking for special timber sections or lengths that are not in our ready treated range, we can quickly arrange treatment to ensure your total requirements have the very best of protection.

## PROVEN PERFORMANCE

TANALITH® is the original and most renowned brand of pressure treated timber available. It has a performance record going back over 60 years.

Now new TANALITH® E has a proven performance that makes it the leading choice for environmentally advanced treated timber throughout the UK and Europe.

Environmentally advanced alternative to traditional pressure treated timber

Complete protection against decay and insect attack.

No maintenance required following installation - simply fit it and forget it!

The ideal material for **BUILDING** and **FENCING** timbers.

## BUILDING TIMBERS

JAMES CALLANDER carry a wide range of ready treated building timbers - JOISTS, SARKING, BATTENS, CARCASSING - in the popular sizes.

All are TANALITH® E treated to a desired service life of 60 years.

## FENCING TIMBERS

JAMES CALLANDER carry a range of ready treated POSTS, RAILS, RANCH BOARDS AND SLATS.

All are TANALITH® E treated to a desired service life of 20 years.



## ORDER AND ENQUIRY DETAILS TO

PHONE 01324 621563

FAX 01324 634 386

E MAIL info@jcallander.co.uk

CONTACTS: BRYAN, GRANT AND ALLAN



## BUILDING TIMBERS

All length packed in range 2.4m - 4.8m

Profile	Pieces per pack
10mm x 38mm	1008
15mm x 150mm	252
19mm x 38mm	504
22mm x 38mm	504
22mm x 75mm	312
22mm x 100mm	240
22mm x 125mm	192
22mm x 150mm	168
25mm x 38mm	504
25mm x 50mm	480
38mm x 50mm	336
47mm x 50mm	252

	Kiln Dried Pieces per pack	Unseasoned Pieces per pack
47mm x 75mm	224	168
47mm x 100mm	160	120
47mm x 125mm	128	96
47mm x 150mm	112	84
47mm x 175mm	96	72
47mm x 200mm	80	60
47mm x 225mm	80	60
75mm x 100mm	100	80
75mm x 150mm	70	56
75mm x 175mm	60	48
75mm x 200mm	50	40
75mm x 225mm	50	40

All 47mm and 75mm x 100mm up to 225mm are end stamped J CROWN C.

James Callander and Son Ltd  
SAWMILLERS & TIMBER MERCHANTS

## FENCING TIMBERS

### POSTS

75mm x 75mm  
Pointed or square ended  
112 pieces per pack

1.5, 1.65, 1.8, 2.1, 2.4m

100mm x 100mm  
Pointed or square ended  
80 pieces per pack

1.5, 1.8, 2.1, 2.4, 3.0, 3.6m

### SLATS

19mm x 100mm  
300 pieces per pack

1.8, 3.6m

### RANCH BOARDS

19mm x 150mm

1.8, 3.6m

### RAILS

32mm x 75mm

3.6, 4.2m



... ready and waiting at

James Callander and Son Ltd  
SAWMILLERS & TIMBER MERCHANTS